

BIRDS

,
\$#!T

NOT A SYSTEM. **A SOLUTION**
TO **MITIGATE BIRDSTRIKE** AT AIRPORTS.



THE MOST INNOVATIVE AND FIELD-PROVEN SOLUTION



BCMS® system leverages years of real-world experience and continuous refinement to deliver unparalleled performance. By combining advanced sensor technology, sophisticated data analysis, and adaptive learning algorithms, BCMS® offers a robust, proven approach to mitigating wildlife risks in airport environments.



<https://www.youtube.com/watch?v=QNf8polwizM>



BCMS® VENTUR IS A NON-COOPERATIVE OBSTACLE DETECTION **AI BASED SYSTEM** FOR AIRPORTS

DEEPTeCH by design

Created by field EXPERIENCE

Developed by KNOWLEDGE



ACQUISITION

DETECTION

CLASSIFICATION

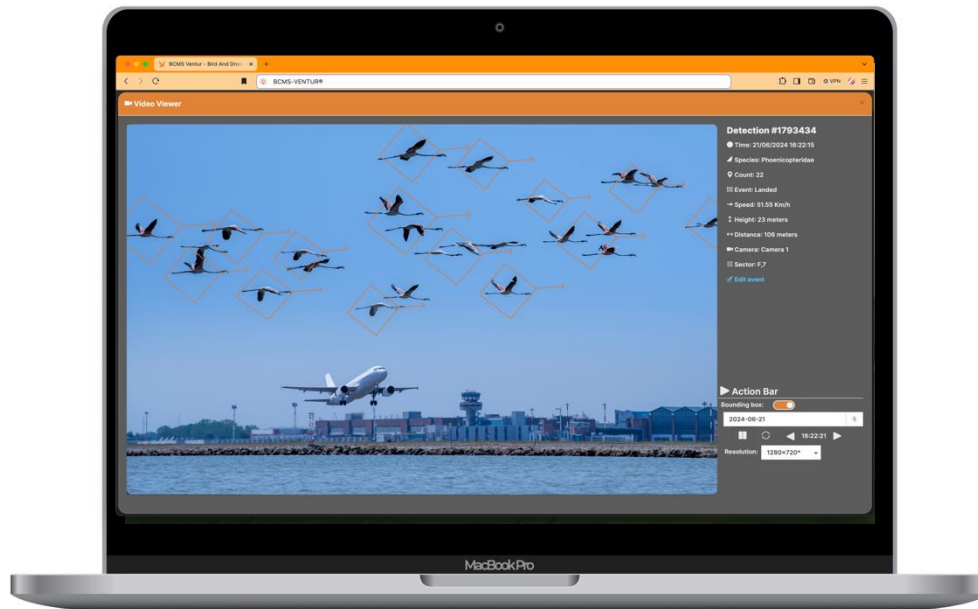
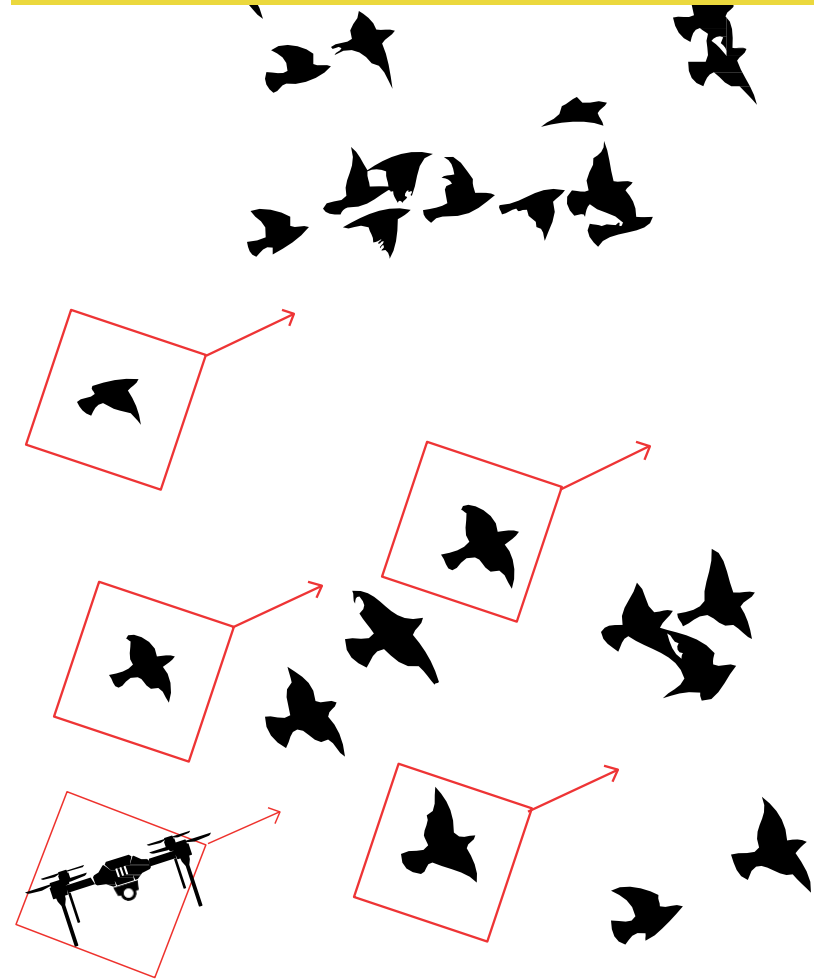
IN FLIGHT AND
ON THE GROUND
DETECTION

MULTI OBJECT
DETECTION AND
CLASSIFICATION

MULTI OBJECT
LOCALIZATION
AND TRACKING

MANAGEMENT
DRIVEN BY RISK

**AUTOMATIC
ACTIVATION OF
DETERRENT
SYSTEMS**



MISSION FIRST, SAFETY ALWAYS

Beyond our cutting-edge technological solutions, we offer a dedicated team of experts who work closely with the user to understand and address user's specific challenges. Our collaborative approach ensures that we not only provide advanced technological system, but also partner with the user to develop tailored strategies that solve user's unique issues.

WE ARE MEMBER OF THE EASA **AI TRUSTWORTHINESS RULEMAKING GROUP.**



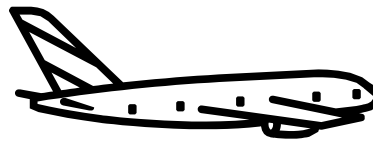
IN THE UNITED STATES, THE NUMBER OF WILDLIFE STRIKES HAS RISEN FROM 1,850 IN 1990 TO 19,603 IN 2023. **54 BIRDSTRIKE A DAY, 4% OF WHICH WITH DAMAGES.**

Wildlife Strikes to Civil Aircraft in the United States 1990 2023 FAA



Over **581** PEOPLE were killed worldwide due to wildlife strikes

STOP



Over **657** AIRCRAFT destroyed between civil and military aviation.

STOP



100% MORTALITY of birds causing bird strikes

STOP

SUSTAINABILITY



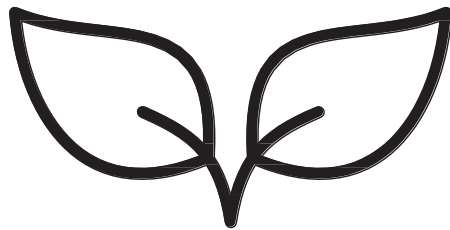
	PERSONAL MONITORING WITH BCU	MONITOR WITH RADAR	MONITORING WITH BCMS® VENTUR
ENVIRONMENTAL IMPACT	LOW	HIGH	SDG FRIENDLY

LOCAL COMMUNITY SUPPORT



THE EDGE COMPANY'S innovative business model revolves around partnering with local firms for commissioning and installation services. This approach yields multiple benefits:

- It facilitates wealth redistribution within communities
- It generates skilled employment opportunities locally
- It fosters and strengthens valuable business relationships



100% GREEN

Supported by environmental associations like WWF-oasi and LAV

SUSTAINABILITY RELEVANCE



BCMS® is engineered with a dual focus on cost-effectiveness and operational excellence. At its core, the system significantly reduces workload by automating key processes and streamlining operations. This efficiency gain is further enhanced by the system's ability to provide real-time, verifiable information that is immediately ready for use. Such timely and accurate data drastically improves the decision-making process, allowing managers and operators to respond swiftly and confidently to evolving situations. By minimizing human intervention in data collection and analysis, BCMS® substantially reduces the likelihood of errors, leading to more reliable outcomes. The combination of workload reduction, real-time information access, and error minimization not only drives down operational costs but also elevates the overall quality and effectiveness of wildlife management efforts.

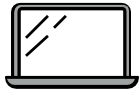


The commercial aviation sector is experiencing continuous growth, driving the development of new airports worldwide. In this expanding landscape, BCMS® offers a cutting-edge solution. As a fully passive system, BCMS® operates without electromagnetic emissions, significantly reducing environmental impact. Its advanced design enables comprehensive monitoring without altering or disturbing the existing ecosystem, ensuring uninterrupted surveillance of designated areas and constant vigilance. By seamlessly integrating with the environment, BCMS® preserves the integrity of local habitats.



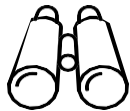
BCMS® operations are meticulously designed to mitigate risks while simultaneously preserving biodiversity and protecting the ecosystem. In the critical arena of birdstrike prevention and bird hazard monitoring, the system plays a pivotal role in reducing human-induced mortality of avian fauna. By employing advanced monitoring and alert mechanisms, BCMS® enables proactive measures that safeguard both aircraft operations and bird populations. This dual-focused approach ensures that aviation safety is enhanced without compromising the natural habitats and behaviors of local bird species.

CAPABILITIES



AUTOMATED OPERATIONS

automated hazard detection with strategic human oversight



SITUATIONAL AWARENESS

8 x more effective bird detection than human observation



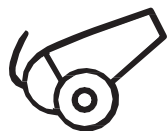
ALL WEATHER OPERATIONS

outperforms human observers in adverse weather



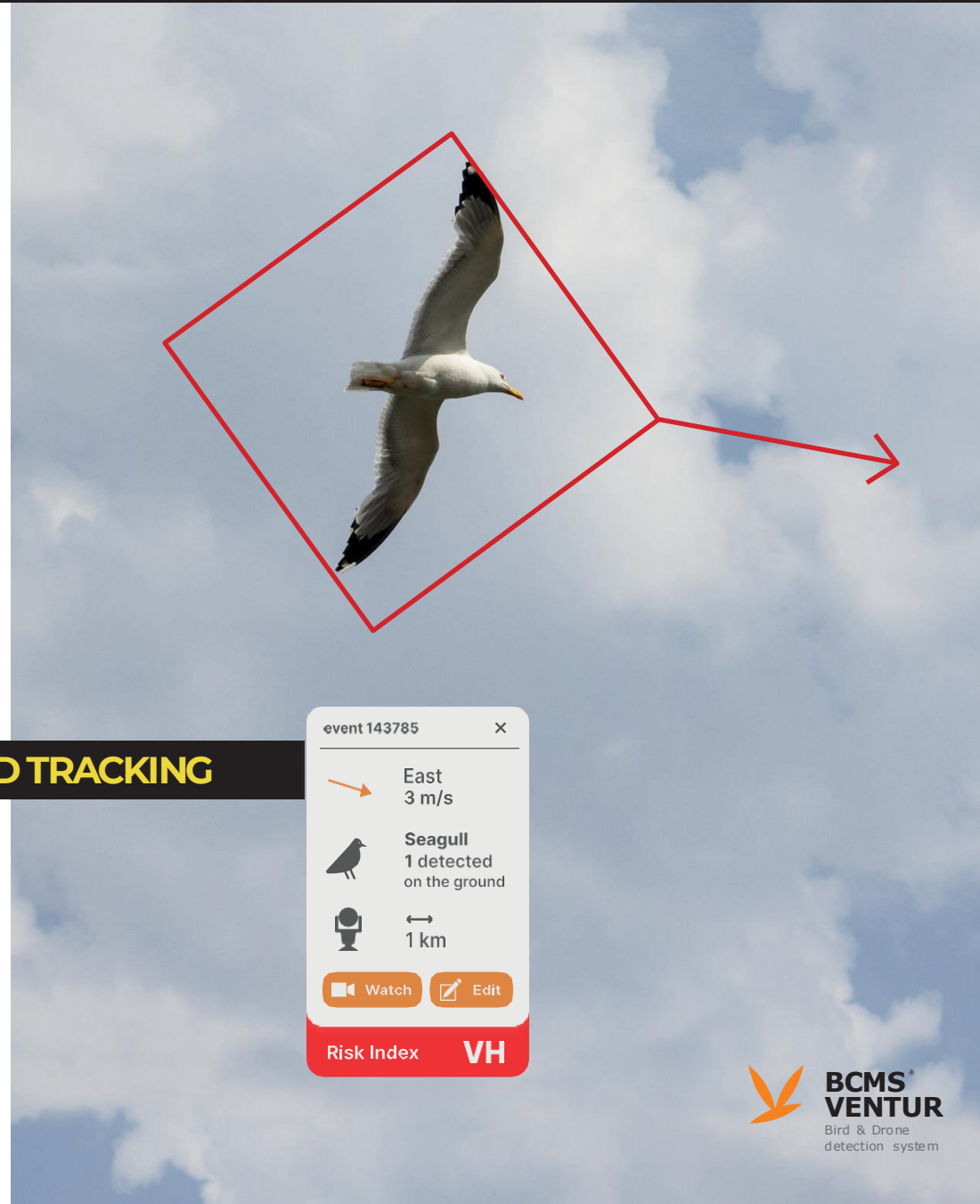
COMPREHENSIVE AVIAN DETECTION AND TRACKING

Identifies and monitors diverse bird species in flight and on ground, regardless of size, in real-time



INTEGRATED DISPERSAL SYSTEM

intelligent automation for optimized wildlife management.



event 143785 x

East
3 m/s

Seagull
1 detected
on the ground

1 km

Watch Edit

Risk Index **VH**

PERFORMANCE

98,8%

ACCURACY IN BIRD IDENTIFICATION

99% of detections confirmed as actual avian targets

Can classify **1,000 SPECIES** with pre-configured identification for the 6 most prevalent local species.



The developed technology and its continuous improvement enable BCMS® to accurately detect obstacles

AT AIRPORTS AND ITS SURROUNDINGS

regardless of background complexity



WILDLIFE ON THE GROUND

is effectively monitored and managed by BCMS®. The system's advanced capabilities extend beyond aerial detection to include comprehensive ground-level surveillance



DETECTION DISTANCE



BCMS® GOES BEYOND MERE DATA COLLECTION

transforming raw information into actionable insights. The system generates comprehensive charts and maps, offering a visual representation of wildlife activity and potential risks. These visualizations are fully customizable, ensuring that each client receives information tailored to their specific needs and operational context.

FINANCIAL

Patrol reduction by 70%

MANPOWER WORKLOAD OPTIMIZATION

Consumable reduction by 40%

Saving on

LIABILITY INSURANCE

Saving on

DAMAGES/REPAIRS

Caused by the bird strike



Minimizing

SCHEDULE DISRUPTIONS

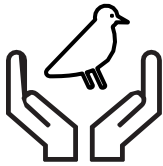
preserving valuable time slots

REPUTATIONAL



LEADER IN SAFETY AND INNOVATION,

Elevate industry standing and expand airline partnerships



CHAMPIONS OF WILDLIFE CONSERVATION

Environmental stewardship: it demonstrates the airport's commitment to environmental responsibility, showcasing leadership in balancing operational needs with ecosystem preservation



PASSENGER SAFETY

Proactively reducing the need for emergency landings due to bird strikes



ENHANCED EFFICIENCY AND COST SAVINGS

Reduced bird strikes and improved management of potential bird strike risks, resulting in more on-time flight departures and arrivals. With less induced cost.



**AND ABOVE ALL WE
REMEMBER THE FUTURE**



GET IN TOUCH

INFO@THEEDGECOMPANY.NET